

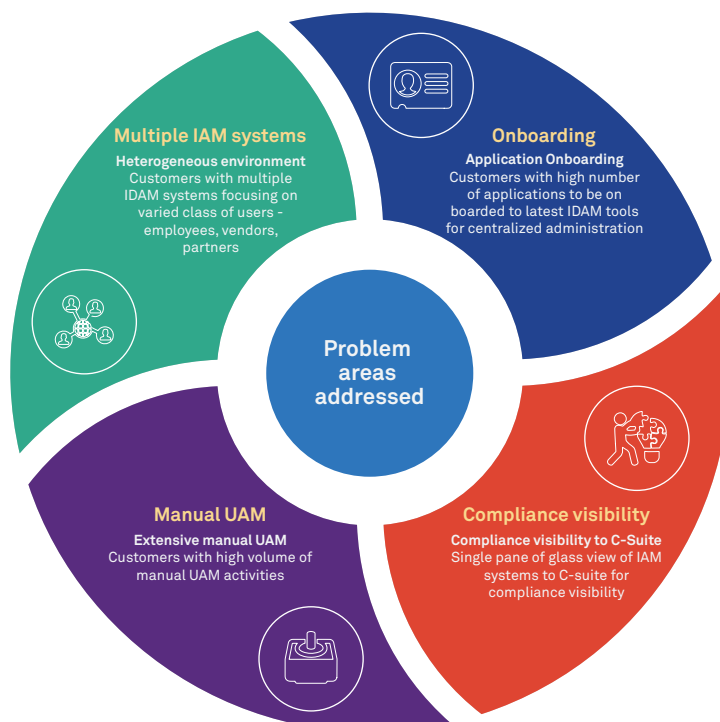


# Wipro's Identity Management Center (IMC)

A single holistic service management platform for all the Identity and Access Management (IAM) services in an enterprise. It provides a 30-70% reduction in effort using its accelerators and automation capabilities.

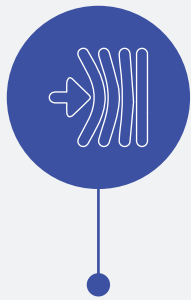
In this ever-changing enterprise landscape, multiple IAM solutions are deployed to enforce security controls on the different types of identities – Enterprise users, Privileged users, Contractors and even consumers. Solutions, which were predominantly on-premise, are moving towards cloud and hybrid. From the support and maintenance perspective, it is a herculean task to manage all IAM systems. In addition, on-boarding, support and maintenance view of applications in IAM solutions is becoming challenging and cumbersome.

Wipro offers Identity Management Centre (IMC) an integrated platform with deployed Identity Management solutions in the enterprise and cloud platform and enables a holistic view of the Identity zManagement landscape.



## Key Takeaways:

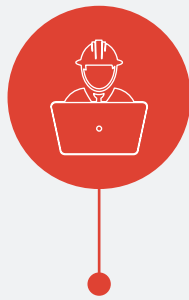
- Targeted for IAM Administrators, Application Owners, Operators and Governance teams
- Using API and integration methods that brings all Identity Management solutions deployed in the enterprise, ITSM tools, automation, and reports under single platform
- This unified portal features
  - RPA based UAM Automation - BOTs management & Governance
  - Accelerators - Application on-boarding and Data Validation & Transformation
  - Unified view to IAM systems integrated with IMC
  - Centralized IAM Monitoring and Reporting dashboard
  - Integrated Reporting dashboard for IAM systems
  - Library view of Documents, Process & Communication Templates, connectors
  - Unified view with respect to Account or IAM SMEs forum



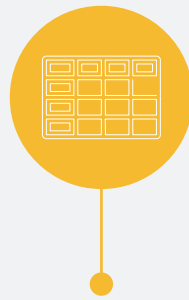
Accelerated  
Application  
Onboarding



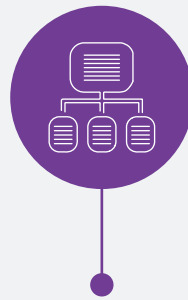
Data validation  
and  
transformation



UAM - BOT  
Management &  
Governance



Unified  
dashboard for  
reporting



Testing  
Automation  
Framework



IAM Monitoring

---

## Value delivered

- 25-40% effort reduction for faster Application on-boarding to IGA, SSO and PAM systems
- 30-70% effort reduction using automation tools in IMC
- 27+ policy checks for Data massaging, validation and transformation for error free application data uploading
- Simplified view of the enterprise Identity & Access Management systems
- 35+ dashboards for rich graphical representation of Reporting & Management trends for IAM/ITSM systems
- Centralized Repository for artefacts (like documents/templates/delivery kits)

---

## Highlights

- **Automation and Acceleration**
  - BOT Governance & Management, Accelerated application on-boarding and data validation & Transformation
- **Unified views**
  - Monitoring, Reports and IAM services view of IAM systems integrated with IMC
- **Centralised Library**
  - Industry best practices, IAM test cases, templates, documents that help in implementation and support

**Wipro Limited**  
Doddakannelli,  
Sarjapur Road,  
Bangalore-560 035,  
India  
Tel: +91 (80) 2844 0011  
Fax: +91 (80) 2844 0256  
[wipro.com](http://wipro.com)

Wipro Limited (NYSE: WIT, BSE: 507685, NSE: WIPRO) is a leading global information technology, consulting and business process services company. We harness the power of cognitive computing, hyper-automation, robotics, cloud, analytics and emerging technologies to help our clients adapt to the digital world and make them successful. A company recognized globally for its comprehensive portfolio

of services, strong commitment to sustainability and good corporate citizenship, we have over 175,000 dedicated employees serving clients across six continents. Together, we discover ideas and connect the dots to build a better and a bold new future.

For more information,  
please write to us at [info@wipro.com](mailto:info@wipro.com)